

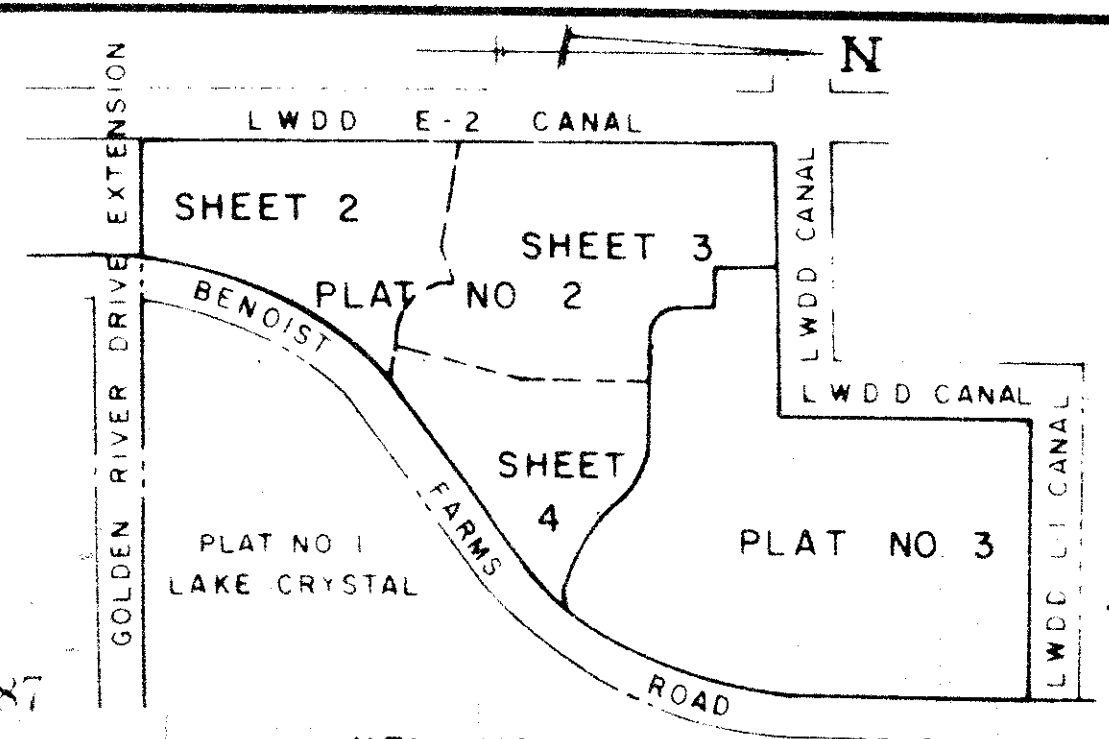
PLAT No. 2 OF LAKE CRYSTAL

A PLANNED UNIT DEVELOPMENT - P.U.D.
BEING A PORTION OF GOLDEN LAKES VILLAGE, P.U.D.

BEING A REPLAT OF A PARCEL OF LAND LYING IN THE PALM BEACH
FARMS COMPANY PLAT NO. 3, AS RECORDED IN PLAT BOOK 2, PGS. 45-54, OFFICE OF PUBLIC
RECORDS, PALM BEACH COUNTY, FLORIDA. SECTION 29, TWP 43S RGE 42E

SHEET 4 OF 4

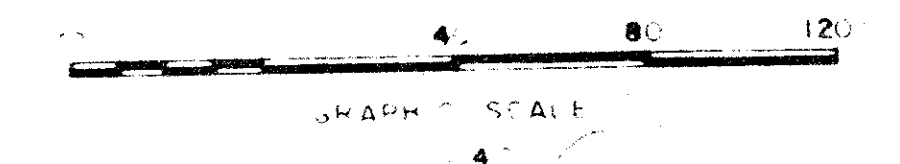
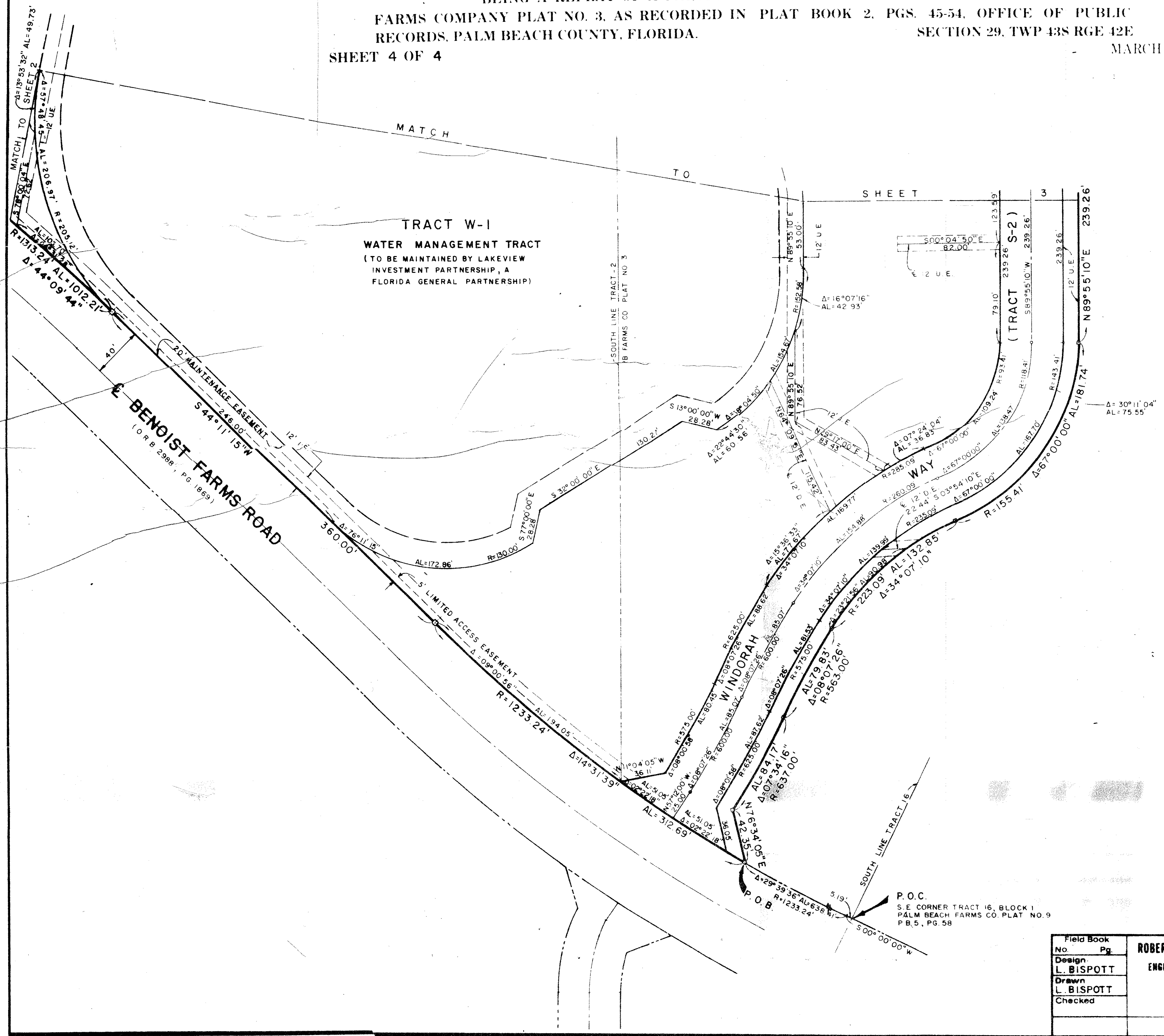
MARCH 1987



78

COUNTY OF PALM BEACH
STATE OF FLORIDA

This Plat was filed for record at
this office
and duly recorded in Plat Book No.
on page
JOHN R. DUNN, Clerk Circuit Court
By: D.C.



29/13/42

SUBMISSION • Lake Crystal
BOOK 57 PAGE 178
FLOOR PLAN ARCHIT PLANS MAP • 150A
QUAL • 4/6 ZONING RS
SHE PVD 9418 of 33431
PUB NAME Golden Lakes Village
TA 2-818

57/78

0251-013

Field Book No. Pg.	ROBERT E. OWEN & ASSOCIATES, INC.	Job No. 86-1061
Design L. BISPOTT	ENGINEERS · PLANNERS · SURVEYORS	Scale 1" = 40'
Drawn L. BISPOTT	WEST PALM BEACH FLORIDA	Date MARCH, 1987
Checked		Sheet 4 of 4
		File No. BF-2402-A

PLAT NO. 2 OF LAKE CRYSTAL